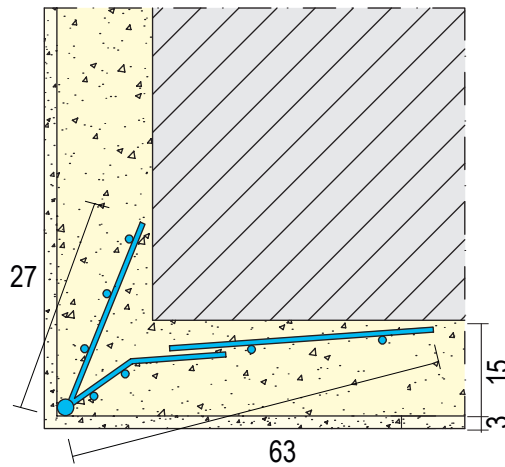


Product data sheet

Status: 02.12.2020 | 07:35

Item no. 1153



Designation	Wired corner bead for interior and exterior plaster (APA) 15 mm
Description	Wire alignment bracket made of galvanised steel for interior and exterior plaster of 15 mm and thicker. With different flange lengths for narrow window and door soffits. The edges of the wire alignment bracket must be covered with at least 3 mm of mineral surface plaster.
Line of Business	Wire corner bead
Productclass	Exterior render
Productgroup	Corner beads
Plaster thickness	15,0 mm
Material	Galvanised steel
Galvanizing	200 g/m ²
Standard EN	EN 13658-2
Product length	260,0 cm, 295,0 cm
Reaction to fire (R2F)	A1
	Different flange lengths. Edges bracket must be covered with at least 3 mm of mineral surface plaster.
Packaging Unit	40 BAR / 40 CAR

This product data sheet corresponds to the current state of development of our products and loses its validity upon publication of a new edition. Make sure you are using the latest edition of this information. Warranty and liability are based on delivery according to our general. Terms and conditions. Please observe the application assembly and storage guidelines.

All statements without guarantee. Reserve technical changes. Product illustrations may differ from the delivery product. Tender specifications, installation instructions and performance declarations (if required by law) can be found on our homepage. Please respect the environment for a proper disposal!

PROTEKTORWERK
Florenz Maisch GmbH & Co. KG
Postfach 1420, D-76554 Gaggenau
Viktoriastr. 58, D-76571 Gaggenau

Tel. +49 7225 977 - 0
Fax +49 7225 9 77 - 111
info@protektor.com
www.protektor.com

