



# Integrated Head & Face Solutions

## **3M™ Head and Face Solutions**

The 3M brand offers a complete line of safety helmets, face shields, combinations and accessories for anyone exposed to hazardous environments. Our goal is continuous improvement of our products to provide the optimal balance of comfort and safety.



## 3M™ Uvicator™ Technology for safer working conditions

When a safety helmet is exposed to sunlight the stability of the plastic shell may be adversely affected due to interaction between UV-radiation and the plastic material which may weaken the helmet and compromise safety of the wearer. The adverse effect is dependent not only on the nature of the plastic material but also the intensity of the UV-radiation. All too often damage to the helmet shell may not be visible to the naked eye.

### Red, the new sign of safety

The patented Uvicator technology is intended to easily and clearly help show the user when his/her helmet has been over-exposed to UV-radiation and thus when to replace it. This technology is the result of many years of full scale and artificial ageing testing of different material combinations under various sunlight exposure conditions.

As the helmet is exposed to sunlight, the Uvicator indicator is calibrated to detect the amount of UV radiation received and gradually changes colour over time, clockwise, from red to white. When the Uvicator indicator turns completely white, it means that the helmet has received maximum tolerable radiation and therefore needs to be replaced.



**Measures exposure to UV radiation**



**Technically calibrated and tested**



**Works globally in most environments**



**Tells you when to replace your helmet**



## 3M™ Safety Helmet G2000 Series

Attractive design and excellent protection! That's the easiest way to summarise the G2000 helmet. The helmet fulfils the requirements for formal testing and is comfortable with its low back and relatively low profile.

It was designed to accommodate additional accessories, such as integrated eyewear, visor and hearing protection.

### Features and Benefits:

#### Ventilation

- For comfort, good ventilation is a must, particularly in warm environments. The G2000 Helmet allows free airflow between the helmet and its harness. Combined with ventilation inlet in the top of the helmet, this helps to increase wearers acceptance

#### 3M™ Uvicator™ Technology

- The disc tells you when it's time to replace your helmet

#### Optional space for customised print

- A flat surface for printing a logotype, brand name, etc.

#### Neck protection

- Extended edge on the back of the helmet provides extra coverage for the sensitive neck area

#### Ratchet headband

- For easier and quicker adjustment

#### Optimal profile for ear muffs

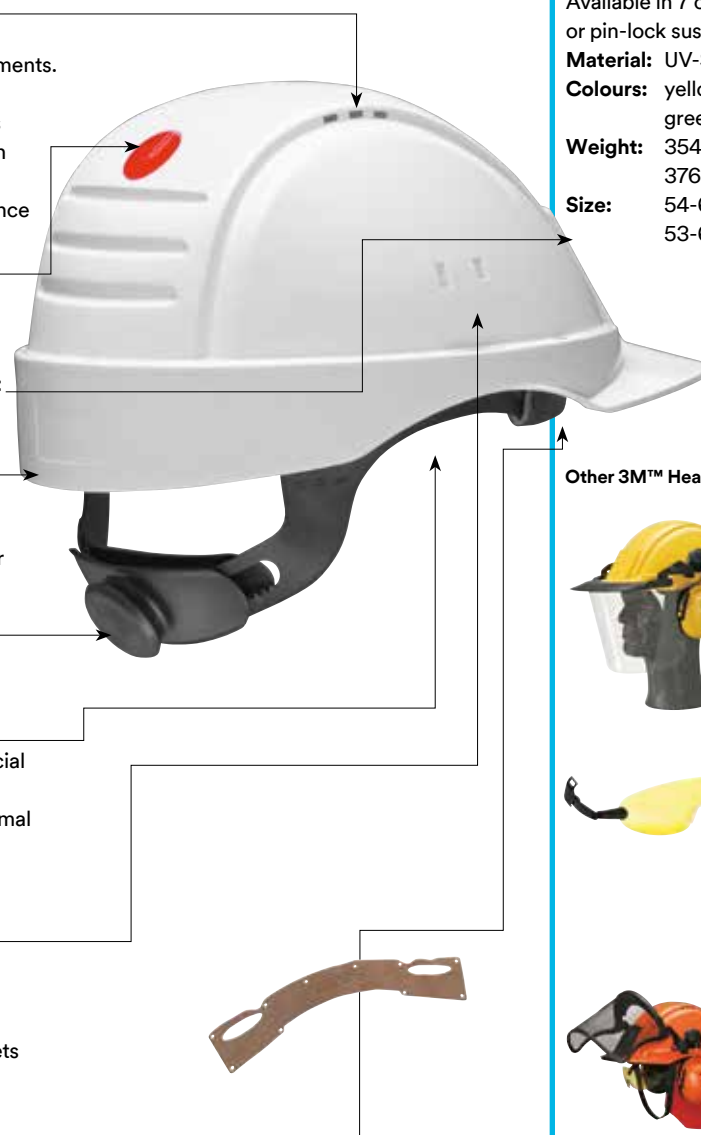
- The G2000 helmet features a special profile design to enable helmet mounted ear muffs to achieve optimal fit and maximum adjustability for individual needs

#### Attachment point for accessories

- An adjustable snap attachment in the balance point of the helmet to allow simple attachment of accessories, such as muffs, headsets and visors

#### Sweatband

- Easy to replace for increased comfort and hygiene. Also available in soft leather



### 3M™ G2000 Series Helmets

Available in 7 colours, with ratchet or pin-lock suspension

**Material:** UV-Stabilised ABS

**Colours:** yellow, white, orange, red, blue, green and Hi-Viz

**Weight:** 354g (pin-lock)  
376g (ratchet)

**Size:** 54-62cm for pin-lock version  
53-62cm for ratchet version

### Other 3M™ Head Protection Products



#### 3M™ Industrial Helmet Combination

Di-electric combination specially designed for work in electrical environments  
Includes: G2001 helmet, H31P3K-01 ear muffs, V4H clear visor.



#### 3M™ Integrated Eyewear

Designed to be used with 3M™ Helmets.  
The design allows the glasses to slide easily between the helmet shell and lining. Available in clear, yellow, grey



#### 3M™ Helmet Accessories

A wide range of accessories are available, including sweatbands, chin straps, rain protection, etc...



## 3M™ Safety Helmet G3000 Series

The G3000 helmet has been developed and designed in close collaboration with industrial and forestry workers. It is intended for use in harsh environments with tough demands

for effective protection. The G3000 has excellent ventilation, good field of vision and is one of few lightweight helmets available on the market today.

### Features and Benefits:

#### 3M™ Uvicator™ Sensor

- The disc tells you when it's time to replace your helmet

#### Ventilation

- Optimised ventilation with lots of ventilation holes

#### Slim design

- Softly rounded design, which helps to avoid helmet parts snagging on branches etc.

#### Reversible lining

- Lining that can be rotated 180° allows the helmet to be worn back-to-front which is ideal, for example, when working in tight spaces or climbing

#### Ratchet headband

- For easier and quicker adjustment

#### Accessories

- Attachment point for accessories

#### Sweatband

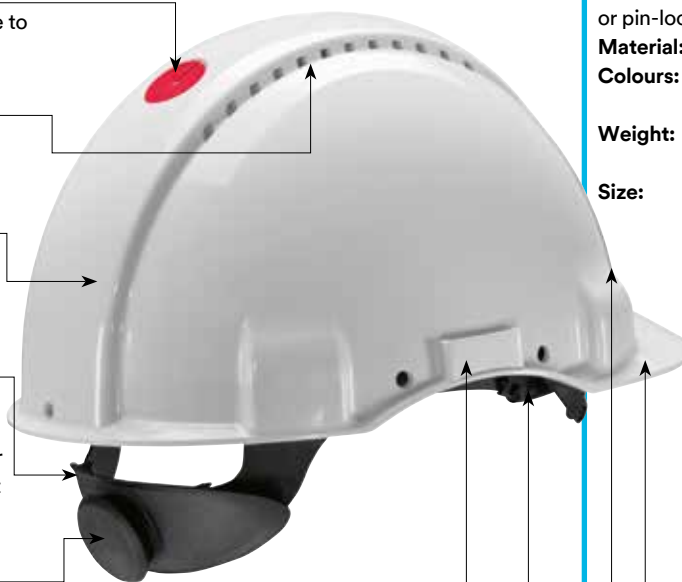
- Easy to replace for increased comfort  
Available in plastic or leather

#### Space for company name

- Surface for printing a logo, brand name, etc.

#### Short brim

- Short brim giving a broader field of view



### 3M™ G3000 Series Helmets

Available in 7 colours, with ratchet or pin-lock suspension

**Material:** UV-stabilised ABS

**Colours:** yellow, white, orange, red, blue, green and Hi-Viz

**Weight:** 310g (pin-lock)  
334g (ratchet)

**Size:** 54-62cm for pin-lock version  
53-62cm for ratchet version



### 3M™ Forestry Helmet Combination

Ready-to-use combination for forestry workers  
Includes: G3000 helmet, V4CK mesh visor, H31P3E ear muffs, GR3C rain protection

### The characteristics of the G3000 helmet are:

Offers excellent protection and approved against EN 397, with the following additional approvals:

- **G3000**  
low temperature, -30°C, and molten metal, MM
- **G3001**  
(unventilated): low temperature, -30°C, molten metal, MM, and electrical insulation 440Vac,

- **G3001 1000V**  
(unventilated): same as G3001 with additional approval according to EN 50365, for electrical insulation at 1000Vac
- **G3000-10**  
(with lamp and cord holder) low temperature, -30°C and molten metal, MM



## 3M™ Safety Helmet H-700 Series

The 3M™ Safety Helmet H-700 is comfortable but tough. Designed with a low profile for improved stability and performance, the H-700 Series is engineered to provide

ultimate full-shift comfort without compromising the protection against small objects striking the top of the hard hat.

### Features and Benefits:

#### Cool wear

- Ventilated headband
- Optional ventilated shell

#### Ease of Use

- Short brim for better upward visibility and user mobility
- Replaceable sweatband

#### Internal Accessory slots for:

- 3M™ Helmet Mounted Earmuffs
- 3M™ Helmet Mounted Communication Solutions
- Integrated Eyewear
- Face Shields
- Welding helmets

#### Suspension

- Comfortable 4 point pin-lock or ratchet suspension with height adjustment or an optional 6 point strap



#### 3M™ Helmet H-700 Vented option

Available in 6 colours with ratchet or pin-lock suspension

EN397:2012 + A1:2012

Very low temperature (-30°C)

#### 3M™ Helmet H-701 Non-vented option

Available in 6 colours with ratchet or pin-lock suspension

EN397:2012 + A1:2012

Very low temperature (-30°C)

Molten metal splash (MM)

Electrical insulation (440 Vac)

Also meet the requirements for low temperature (-50°C) according to ГОСТ P EH 397/A1-2010

**Material:** high density polyethylene

**Colours:** yellow, white, orange, red, blue and green

**Weight:** 356g (pin-lock)  
378g (ratchet)

**Size:** 54-62cm for pin-lock version  
53-62cm for ratchet version





## 3M™ Safety Helmet G3501 Series



Temperature extremes, metal sparks and splashes – that’s the job. And it’s a tough environment to work in. You just can’t afford to compromise the safety and comfort of your workforce.

At 3M we recognise the demanding nature of the work you and your team undertake every day. That’s why we’ve developed a range of completely compatible personal protective equipment (PPE) that can help provide the necessary safety, comfort and compliance in the work environment

### Features and Benefits:

- Lightweight and durable helmet meeting a wide range of standard performance requirements
- Electrically insulating in accordance with EN50365 for live-working in low voltage environments
- Approved for use at temperatures ranging from -30°C to +150°C



#### 3M™ Safety Helmet G3501

Available in 6 colours with ratchet or pin-lock suspension

**Material:** glass fibre reinforced nylon

**Colours:** yellow, white, orange, red, blue and green

**Weight:** 369g (pinlock)  
392g (ratchet)

**Size:** 54-62cm for pin-lock version  
53-62cm for ratchet version



### Select a combination for a complete solution:

#### 3M™ Face Shields



**5XG-IR5** Gold/Green visor shade 4-5, medium energy impact (B), Molten Metal Splash (9)



**5F-11** Clear visor shade 2C-1.2, medium energy impact (B), liquid splash (3), electric arc (8)



**5E-11** Green Image Shade 5, medium energy impact (B), liquid splash (3)



#### 3M™ V6 Integrated Eyewear

The design allows the glasses to slide easily between the head cradle and carrier. Available in clear, yellow and grey

#### Additional heat protection



**NC1-GR** Cotton/Para-aramid neck cover for flame resistance and metal splash resistance

**FC1-GR** Cotton/Para-aramid front cover to protect the helmet from flames and metal splash



**NC1-AL** Aluminized fabric neck cover offering flame, splash and IR resistance to the wearer’s neck

**FC1-AL** Aluminized fabric front cover offering flame, splash and IR resistance to the helmet and wearer



#### Hearing Protection and Communication Headsets

3M PELTOR X Series Earmuffs X4P3E Compatible with a wide range of Earmuffs including the 3M™ PELTOR™ X Series and 3M™ Optime™ Series. A wide range of Communication headsets including 3M™ PELTOR™ LiteCom



## 3M™ Headgear G500 Series

The 3M™ Headgear G500 is a versatile and comfortable solution for use as a standalone face protection system or for combined face and hearing protection. Special design features make it easy to combine the G500 with other 3M™ Safety Products such as face shields, passive earmuffs or

communication headsets and integrated eyewear. This high quality product provides protection against impacts from the front and side, while special attention at the design stage has ensured maximum visibility and wearer comfort.

### Features and Benefits:

#### Front cover

- Ventilation for increased comfort
- Design incorporates a cable holder for Peltor Communication products

#### Face Shield

- A wide range of visors and face shields available for many industrial applications
- Offers a wide field of view

#### Integrated eyewear

- To increase eye protection G500 headgear can incorporate integrated eyewear
- Available in clear, grey and yellow

#### Ratchet Harness

- Ergonomically designed neck support gives maximum comfort for long periods of time
- 3 height adjustment positions
- 8 head size adjustments

#### Robustness

- Firm and sturdy for improved product life
- Reduction of flexible materials minimises stress and deformation caused by rough handling
- Ensures consistent attenuation when combined with hearing protection or communication headsets

#### Hearing Protection

- G500 can be used with or without earmuffs
- 30mm slot fits the Peltor P3E-earmuff attachment



#### 3M™ Industrial Combination G500

- 3M™ Headgear G500
- Clear PC Face Shield 5F-1
- 3M™ Peltor™ Optime™ I Earmuffs



#### 3M™ Forestry Combination G500

- 3M™ Headgear G500
- Stainless Steel Mesh Face Shield 5C-1
- 3M™ Peltor™ Optime™ I Earmuffs

#### 3M™ Integrated Eyewear

Designed to be used with 3M™ Headgear G500. The design allows the glasses to slide easily between the head cradle and carrier. Available in clear, yellow and grey



#### 3M™ Face Shields

The wide range of visors allows for many industrial combinations

#### Mesh Face Shield 5B/5C-1/5J-1

Available in Polyamide, Stainless steel and Etched metal mesh.  
EN1731:2006 Approved



#### Polycarbonate Face Shield 5F-1/5E-1

Available in clear and Shade 5  
EN166:2001 Approved  
5F-1: 2C-1.2 3M  
1:A(BT):3:8:9:K:N  
5E-1: 5 3M 1:BT:3:9:K:N





## 3M™ Helmet Linkage System V5

The 3M™ Linkage System V5 can be mounted onto the 3M™ Industrial Safety Helmet G22 or G3000 to allow attachment of a range of faceshields. This high quality product provides protection against impacts from the front and side.

### Features and Benefits:

#### Face Shield

- A wide range of visors and faceshields available for many forestry and industrial applications
- Offers a wide field of view
- Designed to attach to helmet via a wide range of 3M™ Peltor™ Earmuffs with helmet adapter
- New 'Snap-in' feature makes it easy to combine the faceshield to the linkage system

#### Integrated Eyewear

- To increase eye protection the V5 can incorporate integrated eyewear
- Available in clear, grey and yellow

#### Robustness

- Firm and sturdy for improved product life
- Reduction of flexible materials minimises stress and deformation caused by rough handling
- Ensures consistent attenuation when combined with hearing protection or communication headsets



### 3M™ Helmet Linkage System



**3M™ Forestry Combination**  
G3000NOR31V5C  
3M™ Industrial Safety  
Helmet G3000  
Stainless Steel Mesh  
Faceshield 5C-1  
3M™ Earmuffs H31



**Mesh Face Shield**  
5B/5C-1/5J-1  
Available in Polyamide,  
Stainless steel and Etched  
metal mesh.  
EN1731:2006 Approved

**Polycarbonate Face Shield**  
5F-1/5E-1  
Available in clear and  
Shade 5  
EN166:2001 Approved  
5F-1: 2C-1.2 3M  
1:A(BT):3:8:9:K:N  
5E-1: 5 3M 1:BT:3:9:K:N