



TEXSPRAY T-MAX™

Electric Airless & Air-Assisted Texture Sprayers



OWN YOUR WALL WITH GRACO

VERSATILITY

From spray plasters up to aggregates, T-Max delivers

MODULARITY TO ITS FULLEST

Designed for optimized transport to and from as well as on the jobsite

EASY ACCESS PUMP

No-Tools pump design allows for easy pump access and cleaning

Texture Applications

T-MAX™ 506 – T-MAX™ 657 – T-MAX™ 6912

T-MAX

Electric Texture Sprayers

Airless or Air-Assisted, T-Max delivers!



The easiest way to spray texture

Graco's TEXSPRAY T-MAX electric texture sprayers provide the capability and performance to spray almost all interior and exterior applications whether you spray smooth compound for interior skim coats and decorative finishes or aggregate-based materials for exterior jobs.

A modular design tuned for 1-person handling and supported by a multitude of hose solutions and applicators, T-Max will be able to provide you with all the tools needed for a professional finish.

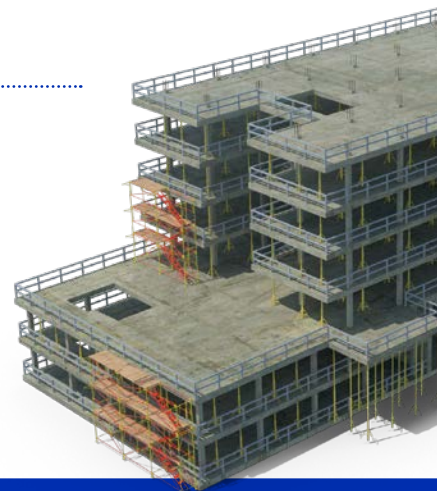
Sprays the Widest Range of Texture Materials



**Separate air compressor required with minimum airflow of 20 SCFM.*

TIP!

When pumping extremely coarse materials, heavier aggregates have a tendency to build up on the interior surface of a hose. This can limit both the flow and dispersion of the material. When spraying these materials, it may be worth considering pre-lubricating your machine's pump and hose. This reduces friction and enables the aggregates to slide more smoothly across the hose.

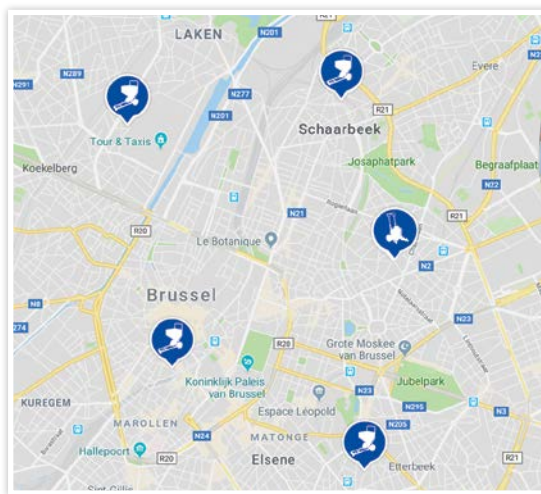


Modularity

Graco's finest in modular designs

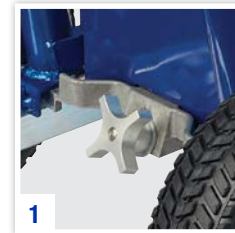
Modularity from your doorstep to a multitude of simultaneous jobsites, up and down floors, all the way to the heart of the pump on the jobsite.

Graco's brand new T-Max provides you with an unseen modular and versatile design without any need for tools.



Job Site Logistics

Relocating your unit or moving up and down floors has never been easier. Simply disconnect your pump from your material hopper and move them individually.



Hoses and Applicators

- Flexible hose sets available in various lengths with quick connecting CamLock™
- Choose between Inline Lance for Airless application, or STX and Pole applicators for Air-Assisted



2" CAM Foot Valve for 2" connection to container

Split Pump-Hopper Design

1. Loosen pump locking pin
2. Open hopper clamp
3. Slide pump away from hopper



Material Supply

Whether you have a Graco T-Max hopper or an external material container, the modularity of T-Max offers you connectivity to various systems.



Quick-Access Piston Pump

T-Max pumps are designed to be taken apart in seconds, allowing access to any part of the pump. Most importantly, no tools are required!

- Cleaning of pump
- Replacement of inlet ball
- Removal of piston spring for aggregate spraying on T-Max 6912

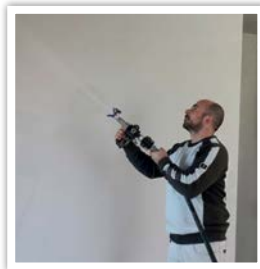


TexSpray T-Max 506 & 657

The First Choice for Interior Plasters and Decorative Materials

TEXSPRAY T-MAX™ 506 and TEXSPRAY T-MAX 657 have been specifically designed to apply most interior plasters and fillers.

Using the T-Max 506 or 657 in combination with an external compressor and an air-assisted applicator allows you to spray decorative plasters with aggregates up to 1mm.



Small, Compact, and Maneuverable

- Balanced design for easy rolling, even when full
- Locking front swivel caster wheel

Material Hoppers

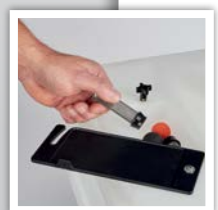
- 65 or 95 litre hoppers
- Steep-sided design keeps material flowing
- Option to install Graco's Vibra-Flo™ system
- Option to install Graco's Bagrollers

Heavy-Duty Modular Frame

- Steel construction withstands jobsite abuse
- Easy, no-tools connect and disconnect
- Small, compact and balanced design for easy maneuvering

Tool Box

- Built-In Storage compartment
- Keep your nozzles, tips and other tools safe



T-MAX 506	50 bar	6 lpm	0.051"	1 mm
T-MAX 657	65 bar	7 lpm	0.061"	1 mm



Material Scraper

Straight and curved edge allowing hopper cleaning as well as emptying material bucket fully

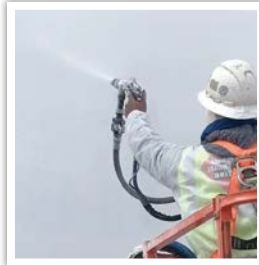


TexSpray T-Max 6912

One Machine for nearly every Texture Application

TEXSPRAY T-MAX 6912, the newest, easiest way to spray smooth and aggregate materials on exterior and interior texture jobs. From textured acrylics, synthetic stucco, EIFS, acoustics, joint compound and more.

Easily apply spray plasters without a compressor or switch to air-assisted mode to spray decorative finishes and heavy aggregates up to 2 mm.



SmartControl™ 3.0

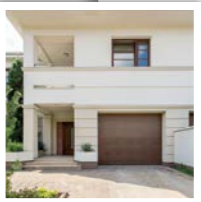
- Delivers smooth, consistent material flow
- Provides Airless or flow mode
- LED display shows pressure, litres, and more



Flow / Pressure Control

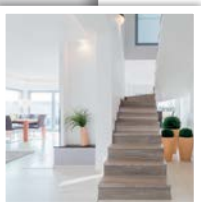
TEXSPRAY T-MAX 6912 comes with a 3-position switch allowing you to choose between Airless, Air-Assist with Shut-Off and a Cleaning position.

- **UP** = Pressure Control for Airless
- **MIDDLE** = Flow Control for Air-Assist with external signal cable control
- **DOWN** = Flow Control without external signal cable, ideal for priming and cleaning



Choose Flow Control for Aggregate Holding Materials

Pump keeps working to maintain set rpm of motor. If rpm is achieved, it will keep pumping at this rpm.



Choose Pressure Control for Airless Plasters

Pump keeps working to maintain set pressure. If pressure is achieved, pump will stop working until pressure drops (spray is initiated)



T-MAX 6912	69 bar	12 lpm	0.071"	2 mm
-------------------	--------	--------	--------	------

Oversized Passages for Maximum Productivity

- Optimized pump design for smooth flow of material
- Oversized piston cage for flow of material and aggregate, even allowing easy no-tool spring removal

230V MaxPower™ DC Motor

- Use with standard 16/20 Amp circuits
- No-maintenance, brushless design
- Heavy Duty Drivetrain

Air Hose and Signal Cable Management

Built-In Air Manifold with EURO air couplers provides fixed air connection to frame relieving strain on signal cable when pulling on air line.

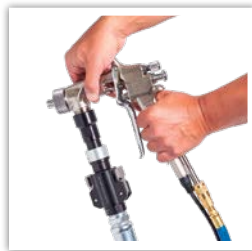


TexSpray T-Max Applicators



The Applicator that best fits your needs

Your applicator is as important as your pump, if not even more. Choose the applicator that best fits your needs. Within the segments of Airless or Air-Assist, Graco offers a variety of applicators.



STX™ Gun

Sequence texture gun for less pack-outs

Starts and stops the pump for you – all you need to do is operate the trigger.

- Provides soft-start operation that eliminates material bursts
- Built-in sensor detects trigger being pulled or released
- Built-in detent allows flow of material and air even when pump is shut-off
- Closes completely when detent is operated



T-Max Lance

Inline™ design applicator with spool valve to open and close. Can be used for Airless as well as Air-Assisted applications.



Inline Gun

Combines the benefits of a normal spray gun with inline material flow. For Airless applications only.



FreeFlo™ Inline Gun

Inline design applicator without valve. Ideal for larger aggregates thanks to its large passage. Can be used for Airless as well, ideally with an external ball-valve.



Rigid and Flexhead Pole Guns

Supported by a large variety of spray discs, Graco's pole guns allow you to spray a multitude of materials for air-assist applications. The rigid version functions as an extension with its 1m length while the flexhead allows for usage in tight spaces.



Remote Switch for Pump Shut-Off

Even if you don't have an STX gun with your T-Max 6912, the ability to shut off the pump remotely can still be achieved with our remote switch kits.

Available in 2 lengths and extendable, use it with your choice of applicator. Simply connect to your hose close to the applicator and start/stop the pump when required.

GRACO'S FINE FINISH KIT FOR TEXTURE

Experience the difference with Graco's Fine Finish kit. This kit transforms the round spray pattern into a controlled spray fan.

A round spray pattern is typical when spraying decorative material with a compressor and an air nozzle: it's difficult to control and not easy to get an even finish.

Available for all applicators with air-assist functionality:

- STX Gun
- T-Max Lance
- FreeFlo™ Inline Gun
- Rigid and Flexhead Pole Guns



TexSpray T-Max Accessories

Get the most out of your equipment by using our professional accessories:



T-Max pump modules

- 17Z169 T-Max 506, 230V EU
- 17Z291 T-Max 506, 230V IT, DK, CH
- 17Z170 T-Max 506, 110V UK
- 17Z171 T-Max 657, 230V EU
- 17Z292 T-Max 657, 230V IT, DK, CH
- 17Z172 T-Max 657, 110V UK
- 17Z173 T-Max 6912, 230V EU
- 17Z293 T-Max 6912, 230V IT, DK, CH
- 17Z174 T-Max 6912, 110V UK

T-Max pump modules

- 17Y905 Prime valve kit, 1" CAM quick connect
- 19A843 2" CAM foot valve (T-Max 6912)
- 25E693 200 liter suction tube kit (T-Max 6912), 2" CAM quick connect, includes 19A843
- 25E692 20 liter suction tube kit, (T-Max 506/657/6912), Rubber quick connect
- 25D091 2" CAM container suction kit, 2" Female CAM quick connects x 0,6m hose



T-Max hopper modules

- 17Z182 4-bag T-Max hopper (65 liter)
- 17Z183 6-bag T-Max hopper (95 liter)

Hopper accessories

- 17Z414 Vibra-Flo, 230V EU
- 17Z186 Bag roller, apx style
- 17Z539 Bag roller
- 19A646 Scraper



Material hoses

- 289959 3/4" x 3m whip hose
- 26A802 3/4" x 10m whip hose
- 289960 1" x 5m hose
- 289961 1" x 10m hose
- 17Z187 1" x 15m hose
- 17Z188 1" x 30m hose

Air hoses

- 17Z303 Air hose, 3/8" x 13m
- 17Z304 Air hose, 3/8" x 18m
- 17Z305 Air hose, 3/8" x 33m

Remote switch kits

- 18A682 Remote switch, 0,25m
- 17Z157 Remote switch, 18m
- 17Z158 Remote switch, 33m
- 15Y525 Extension cable remote, 15m

Air + STX remote wire kits

- 17Z144 Air hose + STX remote wire, 13m
- 17Z148 Air hose + STX remote wire, 18m
- 17Z151 Air hose + STX remote wire, 33m

Air connectors

- 114558 Female air coupler, 1/4" NPT(f)
- 169967 Male air coupler, 1/4" NPT(f)

CAM connectors

- 15T116 1" CAM (m) x 1" NPT(f), aluminium
- 289874 1" CAM (f) x 1" NPT(f), aluminium
- 120307 2" CAM (m) x 1-1/2" NPT(f), aluminium
- 513549 2" CAM (m) x 1-1/2" NPT(m), aluminium
- 120308 2" CAM (f) x 1-1/2" NPT(f), aluminium
- 15U007 1" CAM (m) x 1" CAM (m) plug, aluminium
- 17Z307 1" CAM (f) plug, aluminium
- 17V096 2" CAM (m) plug, aluminium
- 17V095 2" CAM (f) plug, aluminium



T-Max applicators

- 17Y910 STX air assist texture trigger gun *
- 17Z128 FreeFlo inline gun *
- 24B944 Rigid pole gun 1m *
- 24B945 Flex head pole gun *
- 17Z054 T-Max lance with airless tips
- 17Y907 Inline gun, RAC X, HDA651
- 24C414 Ball valve kit, FreeFlo & pole guns

STX gun air nozzles

- 17Z563 4mm stainless steel
- 17Z564 6mm stainless steel
- 17Z565 8mm stainless steel
- 17Z566 10mm stainless steel
- 17Z567 12mm stainless steel

Pole gun air nozzles

- 16A443 3/16" stainless steel (4,75mm)
- 16A444 1/4" stainless steel (6,35mm)
- 16A445 5/16" stainless steel (8mm)
- 16A446 3/8" stainless steel (9,5mm)
- 16A447 7/16" stainless steel (11mm)
- 16A448 1/2" stainless steel (12,7mm)
- 16A449 9/16" stainless steel (14,3mm)
- 128459 3/8" Nickel plated stamped steel (9,5mm)
- 128460 1/2" Nickel plated stamped steel (12,7)
- 128461 9/16" Nickel plated stamped steel (14,3mm)
- 128462 5/8" Nickel plated stamped steel (15,9mm)
- 128463 11/16" Nickel plated stamped steel (17,5mm)
- 128464 3/4" Nickel plated stamped steel (19mm)

T-Max lance & free flo accessories

- 17Z185 Air-assist kit for lance (15m air hose, air-assist nozzles)*
- 248888 3mm round nozzle
- 248524 4mm round nozzle
- 248525 6mm round nozzle
- 248526 8mm round nozzle
- 248527 10mm round nozzle
- 289922 18 Mesh filter with filter scraper (qty 2)
- 289923 30 Mesh filter with filter scraper (qty 2)
- 15X791 Filterless tube, air plug
- 277789 Filter scraper

Fine Finish parts

- 17Z635 STX FF kit (hardened discs, adapter)
- 18A155 Lance/FreeFlo FF kit (hardened discs, adapter)

	Standard	Hardened
FF Disc W4 WideTex	24S099	24S114
FF Disc W6 WideTex	24S100	24S115
FF Disc W8 WideTex	24S101	24S116
FF Disc W10 WideTex	24S102	24S117
FF Disc W12 WideTex	24S103	24S118
FF Disc WXL WideTex	24S104	24S119

Miscellaneous

- 17Z231 Rubber inlet ball (T-Max 6912) (qty 1)
- 17Z232 Rubber inlet ball (T-Max 6912) (qty 5)
- 17Z556 Steel ball kit, inlet + outlet (T-Max 6912)
- 17Z648 Ceramic ball kit, inlet + outlet (T-Max 6912)
- 17Z640 Si-N ball kit, inlet + outlet (T-Max 6912)
- 248395 Air nozzle cleaner
- 15U027 Air hose connection
- 17Z224 Hose lubricant (qty 50)
- 248515 Sponge ball 1.2" cleanout kit (qty 5)
- 19A983 Sponge ball 1" cleanout kit (qty 5)



TEXSPRAY T-MAX™



Technical Specifications

All units ship complete and ready to spray:

Model Name:	T-MAX AIRLESS			T-MAX AIR-ASSIST		T-MAX AIRLESS / AIR-ASSIST	
	506	657	6912	6912	6912	6912	6912
SPECIFICATIONS							
Part Numbers: EU - 230V	17X980	17X983	17X986	17X990	17X993	17Z285	17Z288
Part Numbers: IT, DK, CH - 230V	17X981	17X984	17X987	17X991	17X994	17Z286	17Z289
Part Numbers: UK - 110V	17X982	17X985	17X988	17X992	17Z282	17Z287	17Z290
Max. Tip Size	Plaster 0.051"	Plaster 0.061"	Plaster 0.071"	Plaster 0.071"	Plaster 0.071"	Plaster 0.071"	Plaster 0.071"
Max. Flow - l/min (gpm)	6.4 (1.7)	7.2 (1.9)	12 (3.17)	12 (3.17)	12 (3.17)	12 (3.17)	12 (3.17)
Max. Pressure - bar (PSI)	50 (730)	65 (940)	69 (1000)	69 (1000)	69 (1000)	69 (1000)	69 (1000)
Motor rating - kW (HP)	0.9 (1.2)	0.9 (1.2)	2 (2.8)	2 (2.8)	2 (2.8)	2 (2.8)	2 (2.8)
Compressor l/min	External Compressor	External Compressor	External Compressor	External Compressor	External Compressor	External Compressor	External Compressor
Weight incl. hopper - kg (lbs)	71 (156)	73 (160)	86 (190)	86 (190)	86 (190)	86 (190)	86 (190)
FEATURES							
SmartControl	✓	✓	✓	✓	✓	✓	✓
LED Display			✓	✓	✓	✓	✓
Flow / Pressure Selector	Integrated	Integrated	✓	✓	✓	✓	✓
Pump Shut-off at gun			Optional	Remote Switch	Built in to STX gun	Remote Switch	Built in to STX gun
Hopper	4 bags	6 bags	6 bags	6 bags	6 bags	6 bags	6 bags
Endurance Pump	✓	✓	✓	✓	✓	✓	✓
Piston Packing	Single Packing	Single Packing	V-Packing	V-Packing	V-Packing	V-Packing	V-Packing
Modular Split Frame	✓	✓	✓	✓	✓	✓	✓
Bag Roller	Optional	Optional	Optional	Optional	Optional	Optional	Optional
Vibra-Flo Shaker	Optional	Optional	Optional	Optional	Optional	Optional	Optional
COMPOSITION							
Tips	HDA651	HDA651 + HDA655				HDA651 + HDA655	
WideTex Tips				W4H, W6H, W8H, W10H, W12H, WXLH		W4H, W6H, W8H, W10H, W12H, WXLH	
Nozzles				4mm, 6mm, 8mm, 10mm	4mm, 6mm, 8mm, 10mm, 12mm	4mm, 6mm, 8mm, 10mm	4mm, 6mm, 8mm, 10mm, 12mm
Guard	RAC X - 246215					RAC X - 246215	
Gun	T-Max Lance - 17Z054			Free Flo - 17Z128	STX - 17Y910	T-Max Lance - 17Z054 Free Flo - 17Z128	T-Max Lance - 17Z054 STX - 17Y910
Hose	1" x 5m - 289960	1" x 10m - 289961	1" x 5m - 289960 1" x 10m - 289961	1" x 5m - 289960 1" x 10m - 289961		1" x 5m - 289960 1" x 10m - 289961	
Whip hose	3/4" x 3m - 289959			3/4" x 3m - 289959		3/4" x 3m - 289959	
Toolbox	✓			✓		✓	
Tools	Scraper	Scraper	Scraper	Scraper	Scraper	Scraper	Scraper

All written and visual data contained in this document are based on the latest product information available at the time of publication. Graco reserves the right to make changes at any time without notice.

Graco is certified ISO 9001.

GRACO DISTRIBUTION BV Industrieterrein Oude Bunders / Slakweidestraat 31, B-3630 Maasmechelen
Tel: +32 (89) 770 700 / Fax: +32 (89) 770 777 / <http://www.graco.com>



Every Graco purchase comes with A+ Customer Service.

