

# Operation manual



LVT strip cutter  
(adjustable)



000000



**Döllken**  
Profiles

.....  
we create.  
we innovate.


SURTECO GROUP

# Produce any strip width from 38 to 140 mm for:

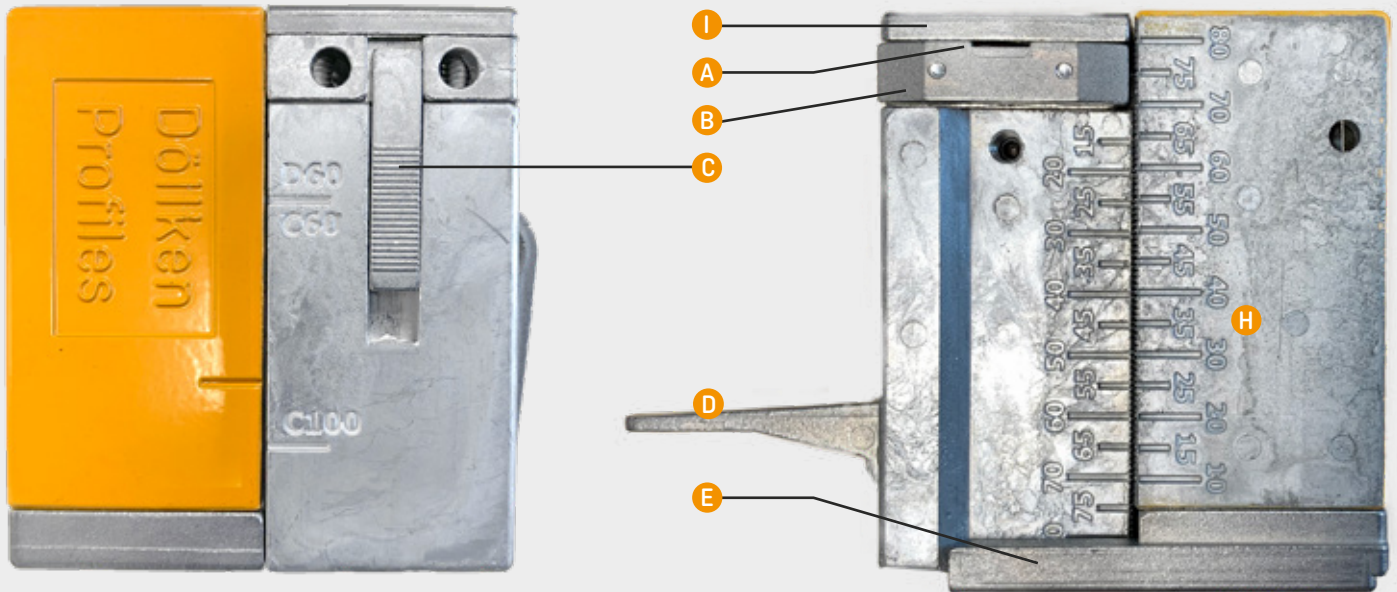


- heterogeneous design coverings up to a thickness of 4 mm
- Covering strips for installation in the solidcore skirting of types C 60 life Top, D 60 life Top, C 100 life



 Here you can go directly to the processing videos.

# Components / construction



- A** Snap-off blade
- B** Blade protection
- C** Blade locking
- D** Eccentric lever
- E** Pad stop for the edge of the flooring
- F** Blade breaker
- G** Allen key
- H** Dimension setting in millimeters
- I** Blade clamping plate



## Accessories

Trapezoid snap-off blades from Döllken Profiles:

- ✓ refined cutting edge
- ✓ particularly wear-resistant



## Safety instructions

- Use only when fully assembled
- Always close the blade lock during storage and transport so that the blade guard covers the blade
- If the blade is blunt or broken, replace it immediately
- Use only 18 mm trapezoidal snap-off blades
- Always insert the blade as far as it will go - otherwise risk of injury!
- Improper use or use that is unfamiliar to the type can lead to damage. Due to the composition of the material, the cut edges of linoleum or foamed soft coverings can become unclean!

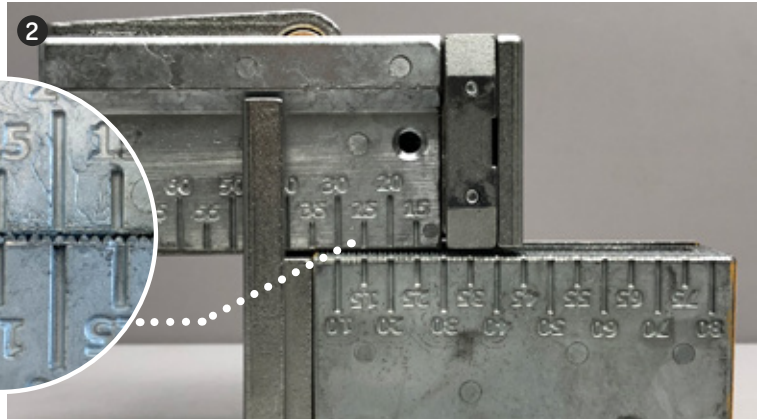
# Procedure

- 1 Open the eccentric lever to loosen the dimension setting



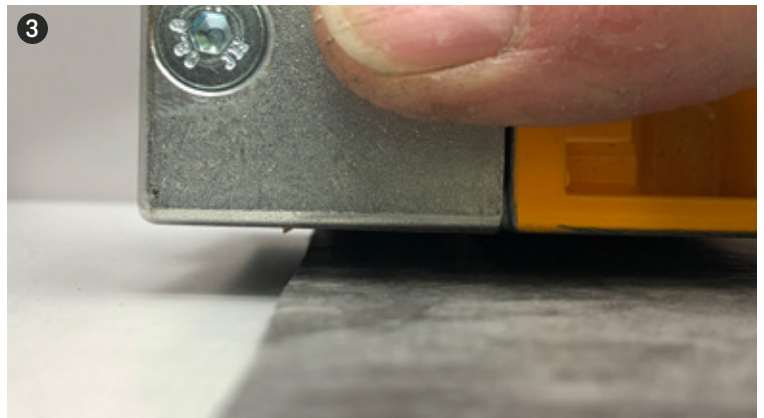
- 2 Set the stripe width using the scale, add the values of the superimposed scale.

Example:  
upper scale 25  
lower scale 15  
corresponds to = 40 mm



- 3 Lay the covering with the decor side up on a flat, straight and firm surface. On the processing side, the edge of the flooring must be straight.

Open the blade lock [C] on the strip cutter. Position the cutter at a slight angle with the pad stop [E] on the edge of the flooring.

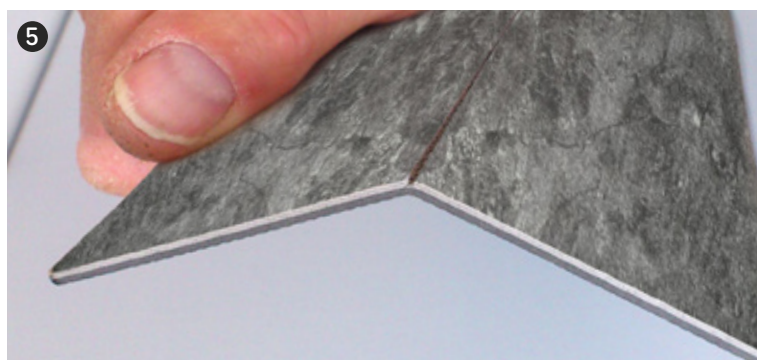


- 4 Place the strip cutter on the decorative side of the covering and press it on. Pull along the edge of the edge of the flooring with light pressure.

After the cut has been made, close the blade lock [C].



- 5 Bend the strip down from the incised side and separate.



The installation instructions can also be found online at [www.doellken-profiles.com](http://www.doellken-profiles.com) or in the Dölken app.

# Change the blade

1 A sharp snap-off blade into the blade breaker (F) and snap off.



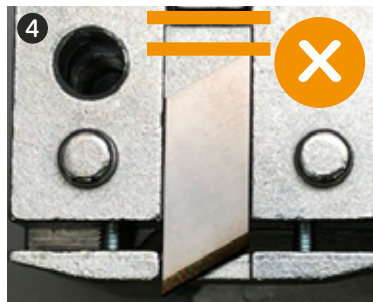
2 Unscrew the blade clamping plate with the Allen key (G), remove any dirt and change the blade.



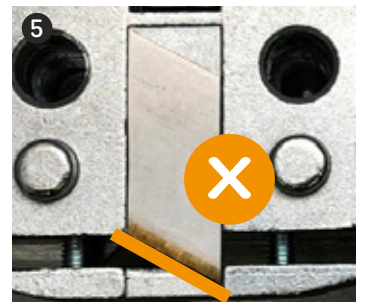
3 The blade must always be up to stop are inserted. Tighten the blade clamping plate.



4 FALSE: Distance to the stop: Risk of injury!



5 FALSE: turn the blade. Blade breakage!



---

## Note on care

- Remove contamination from the blade and the pad stop.
- We recommend using a lightly oiled cloth for cleaning.

Do you have any questions about the product or do you need tips from our professionals? Contact us:

T: +49 3643/ 4170-222  
F: +49 3643/ 4170-330  
info@doellken-weimar.de

www.doellken-weimar.de






@doellkenprofiles



Watch the new installation videos online or in the Döllken Profiles app!

Previous versions are no longer valid once this version is published.

Last updated: 13.10.2020

**Döllken Profiles GmbH**  
Industriestraße 1  
59199 Bönen  
Follow us on   

T: +49 3643 4170 711  
F: +49 3643 4170 330  
info@doellken-profiles.com  
www.doellken-profiles.com